



Commagene Culture Center
Atatürk Cad. No: 5 Merkez, Adıyaman

info@visitcommagene.com www.visitcommagene.com



This publication has been produced with the financial support of the European Union and the Republic of Türkiye. Only Serenas Group is responsible for the content of the publication and in no way can it be interpreted as reflecting the views of the European Union and the Republic of Türkiye.



This project is co-financed by
the European Union and the Republic of Türkiye



TREKKING & CAMPING

trek Commagene

*New trails make our traces heritage
Because
Beautiful as one
We tread Commagene*

*Altuğ Senel,
Trekker, Nature Guide*

**Welcome to the lands of
Commagene, the Forgotten Kingdom!**

Walk the paths of these ancient lands
connecting sites that have been here for
ages. Breathe the mountain air and the
aroma of herbs in the fields. Count the
stars on the night sky. Make a wish!





TREKKING & CAMPING

PERRE



COMMAGENE MAIN NATURE AND CULTURE TRAIL

Start at the city center of Adiyaman and head north-east through the ancient settlement of Perre. A long hike via Palanlı and Komur will take you from there to the Roman Cendere Bridge on the east. Hike to the village of Old Kahta with the Kahta Castle perching on the hills above it. Go further up to the Commagene cult center of Arsameia where kings shake hands with gods. From there, the ancient home of these gods on the peak of Nemrut is just a blink away. Then descend to Karadut Village and reach the Old Gerger through wide valleys extending to the east and northeast. Arrive at the impressive Nissibi Bridge on the Euphrates River and take your good-byes with the lands of Commagene.



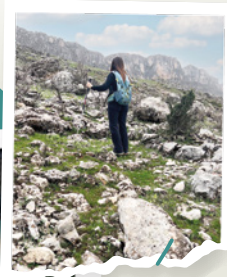
CENDERE BRIDGE



KAHTA CASTLE



ARSAMEIA



NEMRUT

Commagene Short Routes Options

1. Karakuş Tumulus – Cendere Bridge
2. Cendere Bridge – Kahta Castle – Arsameia
3. Old Gerger – Nissibi Bridge
4. Vijne Bridge – Tut
5. Mt. Nemrut Route

Commagene Camping Sites

1. Gölbaşı Nature Park
2. Karadut Village
3. Arsameia Ancient Settlement
4. Cendere Bridge
5. Nissibi Bridge (wild camping)
6. Between Gerger Castle and Beybostan (wild camping)